



activeSENTINEL™

Protection against unknown threats

activeSENTINEL™

Solutions for the unguarded space

At Tradewinds Networks Inc. (TNI) we take a holistic approach to Cybersecurity. TNI addresses both guarded and unguarded space through our multi-layered approach of traditional gateway/firewalls, advanced SSE and SASE, eventually leading into our GuardTower. A hybrid approach is important for the following reasons:

- **Multi-layered defense:** Cybersecurity threats come from various angles, so a one-size-fits-all solution won't do. A holistic approach that integrates technology, processes, and people creates a layered defense, making it much harder for attackers to succeed.
- **Human element addressed:** People are often the weakest link in cybersecurity. Phishing emails and social engineering tricks can deceive even the most tech-savvy users. A holistic approach includes employee training and awareness programs to address this human element.
- **Adaptability to evolving threats:** The world of cybersecurity is constantly changing, with new threats emerging all the time. A holistic approach allows for continuous improvement and adaptation of security measures to stay ahead of the curve.
- **Stronger overall security:** Think of it like building a house. A strong foundation (processes), well-built walls (technology), and a secure roof (people) work together to create a safe and secure structure. A holistic approach ensures all these elements are considered and working together.

In short, TNI's holistic approach to cybersecurity recognizes that it's not just about having the latest security software. It's about creating a culture of security within an organization, where everyone and everything plays a role in keeping data and systems safe. When that fails, then there's the activeSENTINEL™ as the last line of defense.

We Guard the UnGUARDED Spaces

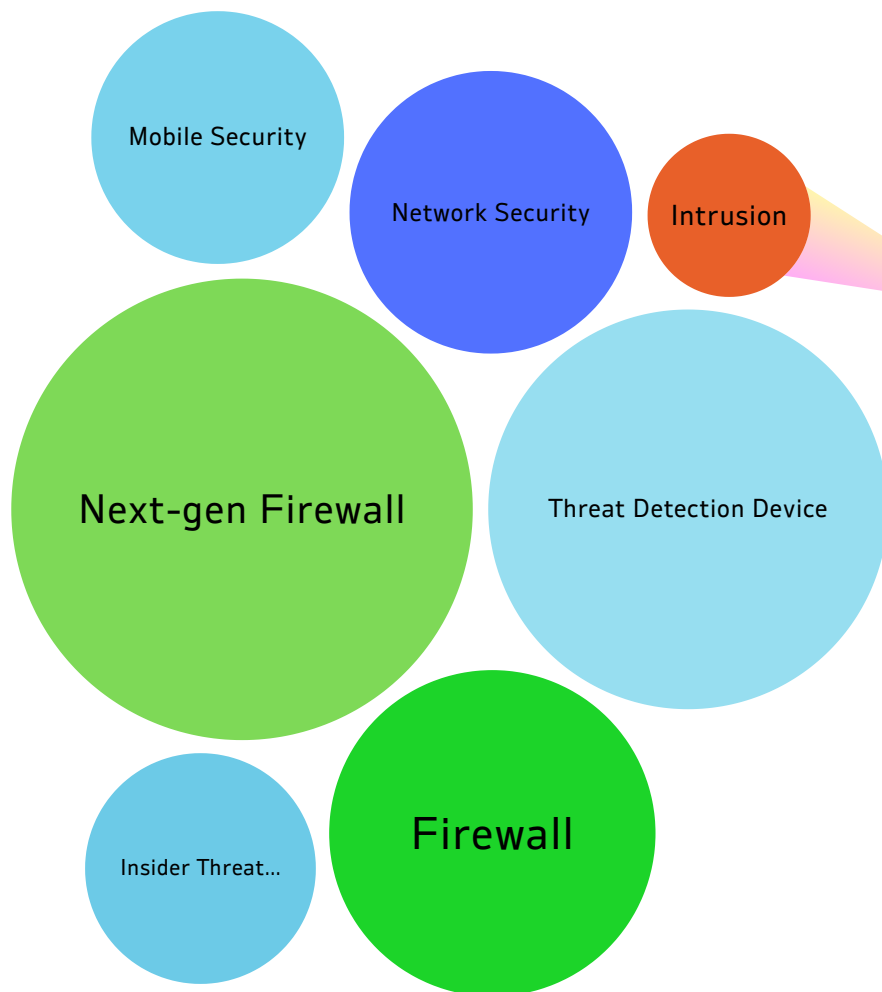
activeSENTINEL™ is not a:

- Firewall
- Antivirus/Anti-malware
- Intrusion Detection and Prevention
- Secure Web Gateways (SWG)
- Endpoint Security
- Data Loss Prevention (DLP)



US Patent Application Publication # 2023/0231880 - Sentinel/TNi

Traditional cybersecurity tools such as firewalls (TNi's GT100/200 series), SIEMs, antivirus, and endpoint security solution are effective at protecting against known threats, they have specific limitations against unknown threats.



activeSENTINEL™

Our activeSENTINEL™ AIDecoy solutions are driven by AI and Machine Learning to play an integral role to enhance cybersecurity postures to enable proactive defensive and offensive capabilities to secure the unguarded space from bad actors.



Solution approach

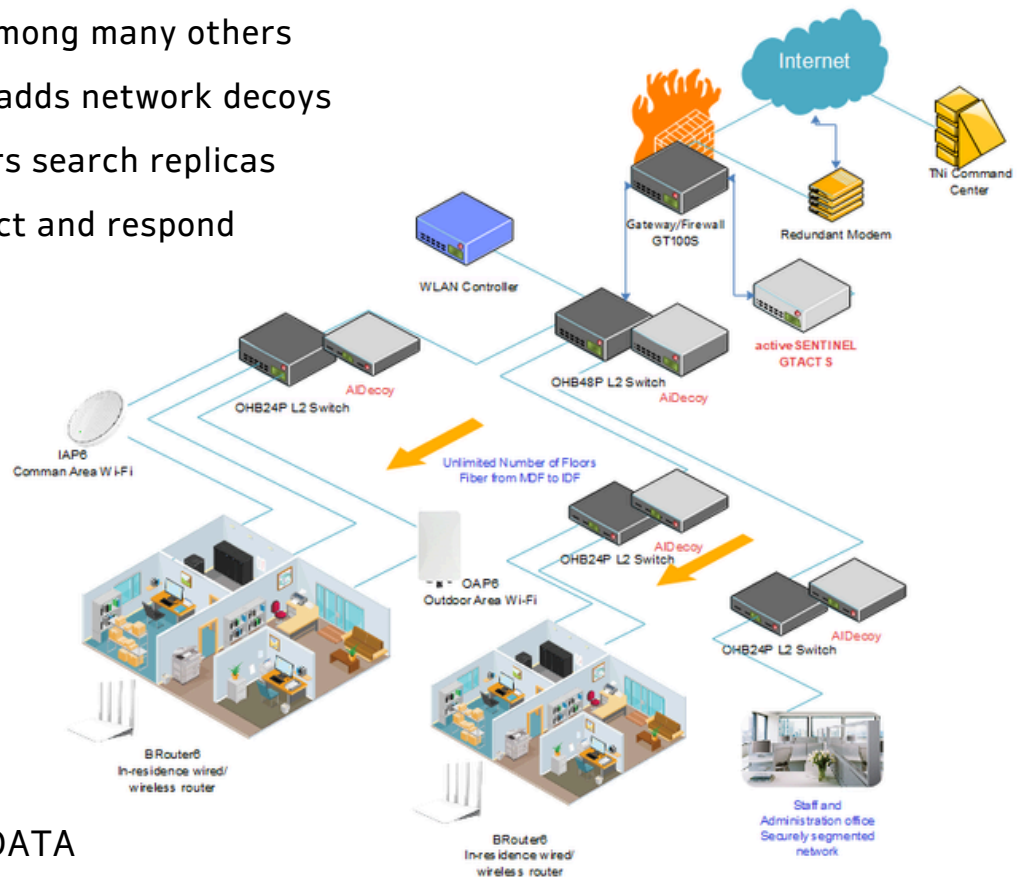
Human Intelligence AI Optimization

Sentinels AI Decoys are the central tools that activeSENTINEL™ uses as defensive and offensive features defending against potential risks to a network.

Sentinels can present ghost networks, distractions, and decoy paths and quickly draft more Sentinels, creating a spike in defenders called a Sentinel Strongpoint.

The AI Decoy Security Network

- Hides your network among many others
- Like a Digital Twin it adds network decoys
- Monitors while hackers search replicas
- Buys you TIME to react and respond



Proactively protect your DATA

- Actively counterstrike or provide false data
- Dynamically expand Sentinels to slow bad actors
- Makes your network not worth their TIME to hack

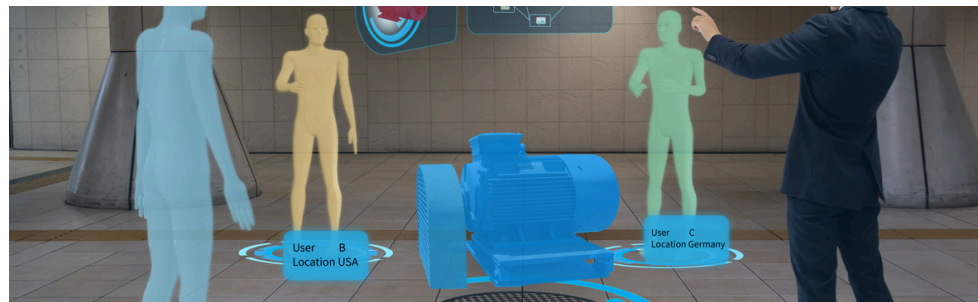
THE SOLUTION:

We assume the attack has already happened and we buy you TIME to respond.

activeSENTINEL™ integrates with any network to deploy a series of platforms and processes designed to ensure detection of any threat.

- Digital Twin/Decoy Platform
- Artificial Intelligence
- Machine learning
- Neural Network
- Deep Learning
- Real Time Detection

Step 1:
AIDecoy
Replication



Step 2:
Strongpoint
Monitor, Alert, and
Misdirection

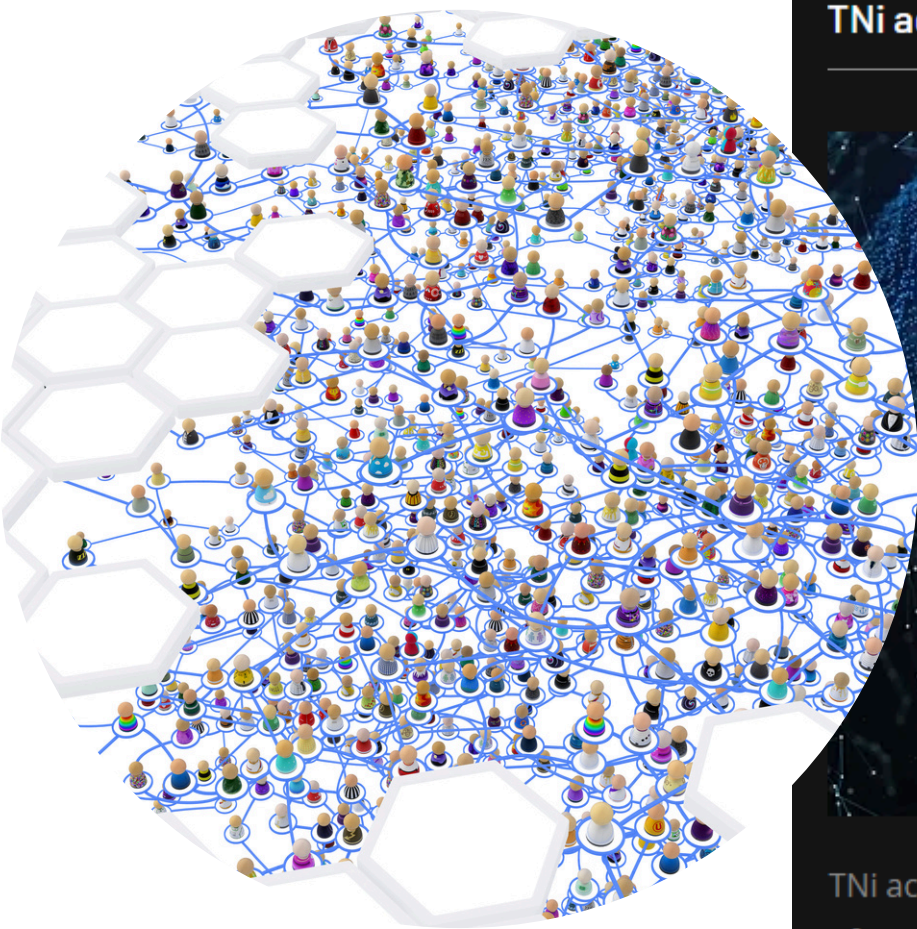


Step 3:
Strikeforce
Actively deter, dynamically
shutdown, or take
offensive measures



Hide n Seek

The activeSENTINEL™ Shadow Networks uses the concept of digital twins or decoys as part of our security architecture by creating digital replicas of your network infrastructure and monitoring these replicas for anomalies, potential threats, and vulnerabilities. This helps you detect and respond to unauthorized or malicious activities effectively.



TNi activeSENTINEL Decoy



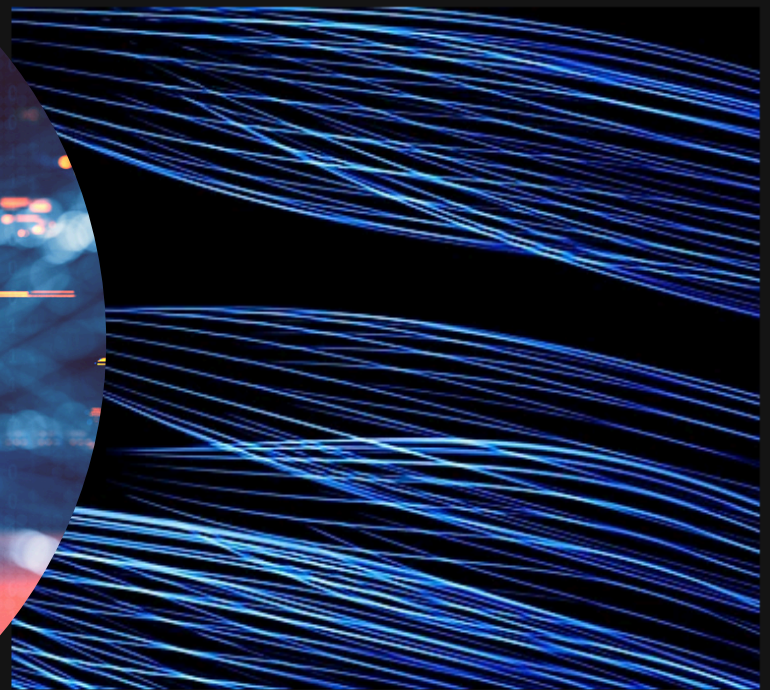
TNi activeSENTINEL Decoys are digital replications of your network. The process allows you to hide your actual network. As bad 'actors' step into your minefield of Decoys, you're alerted and can take measures to protect your actual network.

Getting You Time

The continuous monitoring, learning based on user characteristics, and analysis allow the system to dynamically act to confuse bad actors with various tools included in activeSENTINEL™. activeSENTINEL™ can spike the deployment of more Sentinels and Shadow Networks, confusing would-be hackers. The system can establish a final point for the cybersecurity team to dynamically set. It will draw a proverbial line in the sand with Strikeforce that allows the system to shut down all activities.



TNi activeSENTINEL Strongpoint



TNi activeSENTINEL Strongpoint dynamically spikes the deployment of Sentinels in your network to fend off a barrage of sudden attacks. These 'wartime' events are less frequent, but you'll be prepared when it does happen.

Counterstrike

Moreover, the system can also deploy countermeasures against attackers while proactively warning authorities of network intrusions much earlier in the attack, giving the defender time to react before the malicious threat actors can successfully steal sensitive information or hold the entire network for ransom.





TNi activeSENTINEL Strikeforce





TNi activeSENTINEL Strikeforce can create counterstrikes to make hacker attempts less beneficial for bad actors. There are a variety of methods used by Strikeforce, taking resources and TIME from would-be hackers.

An activeSENTINEL™ deployment for a larger enterprise, campus, and multi-location clients protects each location by leveraging information about the Users, On-Premises IT Infrastructure, Local Networking Equipment, and Important Data at that specific location to individualize the solution and help it “blend in” with the local network. The AI-driven toolset ensures policy based on more than just passwords, prints, or a device.

GTACT Hardware Product Features


Models		GTACT-S	GTACT-M
			
Form Factor		1U 19" Rackmount	1U 19" Rackmount
Platform	Processor	Intel Xeon	Intel Xeon
System Memory	RAM	32GB	64GB
Storage	SSD Support	512GB	1TB
Networking	Ethernet Copper (RJ-45)	2 x 10/100/1000 Mbps RJ-45 Intel Ethernet Ports	2 x 10/100/1000 Mbps RJ-45 Intel Ethernet Ports
	Included Module	2 x 10G SFP+	2 x 10G SFP+
	Optional Modules	Optional 2 or 4 port 10GbE SFP+ Modules	Optional 2 or 4 port 10GbE SFP+ Modules
	USB	2x USB 2.0	2x USB 2.0
	Console	1x RJ45	1x RJ45
I/O Interface	Reset Button	Yes	Yes
	LED	Power/Storage	Power/Storage
	Power Button	1x Power button	1x Power button
	Display	1x VGA	1x VGA
	Power Input	AC power inlet on PSU	AC power inlet on PSU
Expansion	PCIe	1x PCIe X8	1x PCIe X8
	Mini-PCIe	Yes	Yes
Miscellaneous	Watchdog	Yes	Yes
	Internal RTC with Li Battery	Yes	Yes
Cooling	Processor	CPU fan	CPU fan
	System	3x cooling fans	3x cooling fans
Environmental Parameters	Temperature	32° - 113° F / -4° - 158° F (0°C~45°C/ -20°C~70°C)	32° - 113° F / -4° - 158° F (0°C~45°C/ -20°C~70°C)
	Humidity	5 ~ 90% non condensing /5 ~ 95%, non condensing	5 ~ 90% non condensing /5 ~ 95%, non condensing
System Dimensions	(WxHxD)	17.2 x 1.7 x 21.6 in (438x44.5x550mm)	17.2 x 1.7 x 21.6 in (438x44.5x550mm)
	Weight	12.7 lbs (5.8 kg)	12.7 lbs (5.8 kg)
Package Dimensions	(WxHxD)	20 x 5.11 x 17.3 in (510x130x440mm)	20 x 5.11 x 17.3 in (510x130x440mm)
	Weight	14.33 lbs (6.5 kg)	14.33 lbs (6.5 kg)
Power	Type/Watts	220W ATX Dual PSU	220W ATX Dual PSU
	Input	90~264V@47~63Hz	90~264V@47~63Hz
	Optional Redundant Supply	300W Power supply (TN-RPU)	300W Power supply (TN-RPU)
Approvals and Compliance		CE, FCC Class B	CE, FCC Class B
Package List	SATA data cable		SATA data cable
	Power cord		Power cord
	Rack ears/ Rear kit		Rack ears/ Rear kit
	Accessory screw bag		Accessory screw bag

GTACT Hardware Product Features

Models		GTACT-L	GTACT-XL
			
Form Factor		1U 19" Rackmount	1U 19" Rackmount
Platform	Processor	Intel Xeon	Intel Xeon
System Memory	RAM	64GB	64GB
Storage	SSD Support	1TB	1TB
Networking	Ethernet Copper (RJ-45)	2 x 10/100/1000 Mbps RJ-45 Intel Ethernet Ports	2 x 10/100/1000 Mbps RJ-45 Intel Ethernet Ports
	Included Module	4 x 10G SFP+	4 x 10G SFP+
	Optional Modules	Optional 2 or 4 port 10GbE Modules	Optional 2 or 4 port 10GbE SFP+ Modules
	USB	2x USB 2.0	2x USB 2.0
	Console	1x RJ45	1x RJ45
IO Interface	Reset Button	Yes	Yes
	LED	Power/Storage	Power/Storage
	Power Button	1x Power button	1x Power button
	Display	1x VGA	1x VGA
	Power Input	AC power inlet on PSU	AC power inlet on PSU
Expansion	PCIe	1x PCIe X8	1x PCIe X8
	Mini-PCIe	Yes	Yes
Miscellaneous	Watchdog	Yes	Yes
	Internal RTC with Li Battery	Yes	Yes
Cooling	Processor	CPU fan	CPU fan
	System	3x cooling fans	3x cooling fans
Environmental Parameters	Temperature	32° - 113° F / -4° - 158° F (0°C~45°C/ -20°C~70°C)	32° - 113° F / -4° - 158° F (0°C~45°C/ -20°C~70°C)
	Humidity	5 ~ 90% non condensing /5 ~ 95%, non condensing	5 ~ 90% non condensing /5 ~ 95%, non condensing
System Dimensions	(WxHxD)	17.2 x 1.7 x 21.6 in (438x44.5x550mm)	17.2 x 1.7 x 21.6 in (438x44.5x550mm)
	Weight	12.7 lbs (5.8 kg)	12.7 lbs (5.8 kg)
Package Dimensions	(WxHxD)	20 x 5.11 x 17.3 in (510x130x440mm)	20 x 5.11 x 17.3 in (510x130x440mm)
	Weight	14.33 lbs (6.5 kg)	14.33 lbs (6.5 kg)
Power	Type/Watts	220W ATX Dual PSU	220W ATX Dual PSU
	Input	90~264V@47~63Hz	90~264V@47~63Hz
	Optional Redundant Supply	300W Power supply (TN-RPU)	300W Power supply (TN-RPU)
Approvals and Compliance		CE, FCC Class B	CE, FCC Class B
Package List	SATA data cable		SATA data cable
	Power cord		Power cord
	Rack ears/ Rear kit		Rack ears/ Rear kit
	Accessory screw bag		Accessory screw bag

ACT-XLTA Hardware Product Features

This product complies with US TAA requirements.

Models		ACT-XLTA
		
Form Factor		1U 19" Rackmount
Platform	Processor	Intel Xeon
System Memory	RAM	64GB
Storage	SSD Support	1TB
Networking	Ethernet Copper (RJ-45) Included Module	8 x 10/100/1000 Mbps RJ-45 Intel Ethernet Ports
	Optional Modules	0
	USB	10G/25G/40G Modules
	Console	2x USB 3.0
I/O Interface	Reset Button	1x RJ45
	LED	Yes
	Power Button	Power/Storage
	Power Input	1x Power button
Expansion	PCIe	AC power inlet on PSU
	Mini-PCIe	1x PCIe X8
Miscellaneous	Watchdog	Yes
	Internal RTC with Li Battery	Yes
Cooling	Processor	CPU fan
	System	2x cooling fans
Environmental Parameters	Temperature	32° - 113° F / -4° - 158° F (0°C~45°C/ -20°C~70°C)
	Humidity	5 ~ 90% non condensing /5 ~ 95%, non condensing
System Dimensions	(WxHxD)	44 mm (1.73") (H) x 430 mm (16.93") (W) x 450 mm (17.7") (D)
	Weight	12.7 lbs (5.8 kg)
Package Dimensions	(WxHxD)	20 x 5.11 x 17.3 in (510x130x440mm)
	Weight	13.2 lbs (6 kg)
Power	Type/Watts	220W ATX Dual PSU
	Input	90~264V@47~63Hz
	Optional Redundant Supply	300W Power supply
Approvals and Compliance		CE, FCC Class B
Package List		SATA data cable
		Power cord
		Rack ears/ Rear kit
		Accessory screw bag

Sales and Support Contact:
Email: sales@tradewindsnetworks.com or support@tradewindsnetworks.com
Web: www.tradewindsnetworks.com

Tradewinds Networks
23 Corporate Plaza Ste 150
Newport Beach, CA 92660
www.tradewindsnetworks.com

