

GT100 Series

GT100S/GT100M

Small and Medium business performance gateways with advanced features and fiber ports



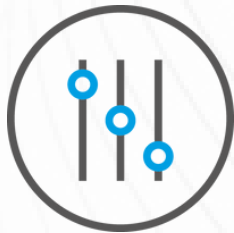
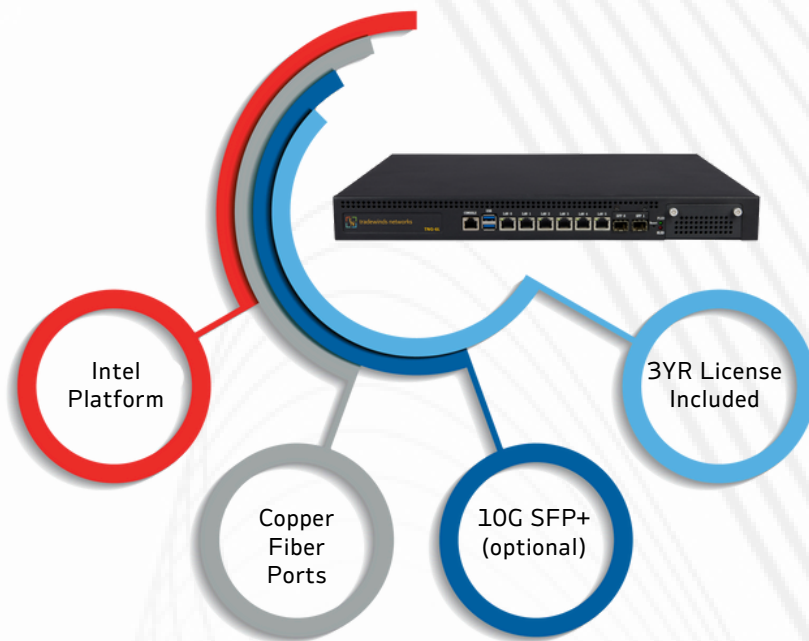
Performance and Flexibility

Full service SMB Gateway with Enterprise Features to any Ecosystem



- Intel-based performance platform
- Stateful Inspection
- Captive Portal
- Intrusion Detection/Prevention
- High Availability
- Link Aggregation/Failover
- Multi-WAN Features

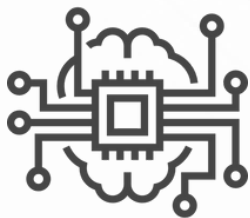
GT100 Series Highlights



TNI's GT100 SMB gateway's stateful firewall support for IPv4 and IPv6 and live view on blocked or passed traffic ensure visibility and security. The system is also resilient featuring multi-WAN capabilities including load balancing and failover support. Complimented by integrated VPN support for IPsec (including route based), OpenVPN as well as pluggable support for Tinc (full mesh VPN) and WireGuard.



The GT100 series gateways ensure hardware failover for automatic and seamless hardware failover with state synchronization utilizing the common address redundancy protocol (CARP) to get the highest possible availability. Support for SD-WAN to easily setup, configure and monitor the ZeroTier plugin can be used to setup your Software Defined WAN within minutes.



GT100 two factor authentication (2FA) is supported throughout the system, for both the user interface and services such as VPN. The GT100S and GT100M easy-to-use pluggable support for OSPF and BGP using the Free Range Router project make it easy for the SMB user. GT100 gateways enable SMBs with a fully integrated web proxy with access control to block external (blacklists) unwanted traffic.

Stateful firewall

- Filter by:
 - Source
 - Destination
 - Protocol
 - Port
 - OS (OSFP)
- Limit simultaneous connections
- Log matching traffic
- Policy Based Routing
- Packet Normalization
- Option to disable router filter

Policy organization

- Alias Support
- IP addresses
- Port ranges
- Domain names (FQDN)
- Interface Groups
 - Create security zones with equal rules
- Rule Category
 - Easy access rule sets

Granular control state table

- Adjustable state table size
- On a per rule bases
 - Limit simultaneous client connection
 - Limit states per host
 - Limit new connections per second
 - Define state timeout
 - Define state type
- State types
 - Keep
 - Sloppy
 - Modulate
 - Synproxy
 - None

Optimization options

- Normal
- High latency
- Aggressive
- Conservative

2-Factor Authentication

- Supports TOTP
- Google Authenticator
- Support services:
 - Captive Portal
 - Proxy
 - VPN
 - GUI
 - SSH / Console

802.1Q VLAN support

- Max 4096 VLAN's

Link Aggregation & Failover

- Failover
- Load Balance
- Round Robin
- Cisco Ether Channel (FEC)
- 802.3ad LACP

Border Gateway Protocol Other Interface types

- Bridged interfaces
- Generic Tunnel Interface (GIF)
- Generic Routing Encapsulation
- 802.1ad QinQ

Network Address Translation

- Port forwarding
- 1:1 of IP's & Subnets
- Outbound NAT
- NAT Reflection

Traffic Shaping

- Limit bandwidth
- Share bandwidth
- Prioritize traffic
- Rule based matching
 - Protocol
 - Source
 - Destination
 - Port
 - Direction

IGMP Proxy

- For multicast routing

Universal Plug & Play Dynamic DNS

- Selectable from a list
- Custom
- RFC 2136 support

DNS Forwarder

- Host Overrides
- Domain Overrides

DNS Server

- Host Overrides
 - A records
 - MX records
- Access Lists

DNS Filter

- Supports OpenDNS

DHCP Server

- IPv4 & IPv6
- Relay Support
- BOOTP options

Multi WAN

- Load balancing
- Failover
- Aliases

Load Balancer

- Balance incoming traffic over multiple servers

Network Time Server

- Hardware devices
- GPS
- Pulse Per Second

Intrusion Detection & Prevention

- Inline Prevention
- Integrated rulesets
 - SSL Blacklists
 - Feodo Tracker
 - Geolite2 Country IP
 - Emerging Threats ETOpen
- SSL Fingerprinting
- Auto rule update using configurable Cron



Captive Portal

- Typical Applications
- Guest Network
- Bring Your Own Device (BYOD)
- Hotel Wi-Fi Access
- Template Management
- Multiple Zones
- Authenticators
- LDAP
- Radius
- Local User Manager
- Vouchers / Tickets
- Multiple
- None (Splash Screen Only)
- Voucher Manager
 - Multiple Voucher Databases
 - Export vouchers to CSV
- Timeouts & Welcome Back
- Bandwidth Management
 - Share evenly
 - Prioritize
 - Protocols
 - Ports
 - IP
- Portal bypass
 - MAC and IP whitelisting
- Real Time Reporting
 - Live top IP bandwidth usage
 - Active Sessions
 - Time left
 - Rest API
- Virtual Private Networks
 - IPsec
 - Site to Site
 - Road Warrior
- OpenVPN
 - Site to Site
 - Road Warrior
 - Easy client configuration exporter
- Tinc (Plugin)
 - Full mesh routing
- PPTP (Legacy)
- LT2P (Legacy)
- PPTP (Legacy)
- LT2P (Legacy)

High Availability

- Automatic hardware failover
- Synchronized state table
- Configuration synchronization

Caching Proxy

- Multi interface
- Transparent Mode
- Support SSL Bump
- SSL Domain only (easy filtering)
- Access Control Lists
- Blacklists
- Category Based Web-filter
- Traffic Management
- Auto sync for remote blacklists
- ICAP (supports virus scan engine)

Backup & Restore

- History & Diff support
- File Backup
- Cloud Backup

SNMP

- Monitor & Traps

Diagnostics

- Filter reload status
- Firewall Info (pfInfo)
- Top Users (pfTop)
- Firewall Tables
 - Aliases
 - Bogons
- Current Open Sockets
- Show All States
- State Reset
- State Summary
- Wake on LAN
- ARP Table
- DNS Lookup
- NDP Table
- Ping
- Packet Capture
- Test Port
- Trace route

Enhanced Reporting



- Network Flow Analyzer 'Insight'
 - Fully Integrated
 - Detailed Aggregation
 - Graphical Representation
 - Clickable and Searchable
 - CSV Exporter
- System Health
 - Round Robin Data
 - Selection & Zoom
 - Exportable
- Traffic Graph
 - Live Traffic Monitoring

Network Monitoring

- Netflow Exporter
 - Version 5 & version 9
 - Local for 'Insight'

Firmware

- Easy Upgrade
 - Reboot warning for base upgrades
- SSL Flavour selectable
 - OpenSSL
 - LibreSSL
- Selectable Package Mirror
- Reinstall Single Package
- Lock Package (prevents upgrade)
- Audit Feature
 - Check installed packages for known security vulnerabilities
- Plugin Support
 - VMware tools
 - Xen tools
 - Tinc
 - HAProxy -Load balancer
 - Let's Encrypt
- RESTful API
 - ACL support

Models		GT100S	GT100M
			
Form Factor		1U 19" Rackmount	1U 19" Rackmount
Platform	Processor	Intel Core i5 3.30GHz	Intel Core i7 3.30GHz
	Cores	4	4
	Threads	4	4
	Cache	6MB	6MB
BIOS		AMI SPI Flash BIOS	AMI SPI Flash BIOS
System Memory	Technology	DDR4 2400/2133 MHz	DDR4 2400/2133 MHz
	RAM	16GB	32GB
Storage	SSD Support	256G	512GB
Networking	Ethernet Copper (RJ-45)	6 x 10/100/1000 Mbps RJ-45 Ethernet Ports	6 x 10/100/1000 Mbps RJ-45 Ethernet Ports
	Ethernet Fiber SFP+ (10Gbps)	2 x 1000 Mbps SFP	2 x 1000 Mbps SFP
	USB	0	2 x 10G SFP+
	Console	2x USB 2.0	2x USB 2.0
		1x RJ45	1x RJ45
I/O Interface	Reset Button	Yes	Yes
	LED	Power/Storage	Power/Storage
	Power Button	1x Power button	1x Power button
	Display	1x VGA	1x VGA
	Power Input	AC power inlet on PSU	AC power inlet on PSU
Expansion	PCIe	1x PCIe X8	1x PCIe X8
	Mini-PCIe	Yes	Yes
Firewall Throughput		17.4Gpbs	20Gpbs
Firewall Packets Per Second		1450Kpps	1750Kpps
Firewall Port to Port Throughput		9Gpbs	10Gpbs
Firewall Port to Port Packets Per Second		1450Kpps	1750Kpps
Concurrent Sessions		15000000	31000000
New Connections Per Second		50000	50000
Firewall Latency (average)		100us	100us
Firewall Policies (Recommended Maximum)1		10000	10000
IPsec VPN Throughput (AES256GCM16)		2.5Gpbs	2.5Gpbs
IPsec VPN Packet Per Second (AES256GCM16)		220Kpps	220Kpps
Threat Protection Throughput Packet Per Second		163Kpps	163Kpps
Threat Protection Throughput		~2Gpbs	~2Gpbs
High Availability with State Synchronisation		Requires Two	Requires Two
Miscellaneous	Watchdog	Yes	Yes
	Internal RTC with Li Battery	Yes	Yes
Cooling	Processor	CPU fan	CPU fan
	System	2x cooling fans	2x cooling fans
Environmental Parameters	Temperature	32° - 113° F / -4° - 158° F (0°c~45°c/ -20°c~70°c)	32° - 113° F / -4° - 158° F (0°c~45°c/ -20°c~70°c)
	Humidity	5 ~ 90% non condensing /5 ~ 95%, non condensing	5 ~ 90% non condensing /5 ~ 95%, non condensing
System Dimensions	(WxHxD)	16.8 x 1.7 x 17.3 in (428x44.5x440mm)	16.8 x 1.7 x 17.3 in (428x44.5x440mm)
	Weight	9.9 lbs (4.5 kg)	9.9 lbs (4.5 kg)
Package Dimensions	(WxHxD)	20 x 5.11 x 17.3 in (510x130x440mm)	20 x 5.11 x 17.3 in (510x130x440mm)
	Weight	11.4 lbs (5.2 kg)	11.4 lbs (5.2 kg)
Power	Type/Watts	220W ATX Single PSU	220W ATX Dual PSU
	Input	90~264V@47~63Hz	90~264V@47~63Hz
Approvals and Compliance		CE, FCC Class B	CE, FCC Class B
Package List		SATA data cable	SATA data cable
		Power cord	Power cord
		Rack ears	Rack ears
		Accessory screw bag	Accessory screw bag



tradewinds networks

GT100 Series

Product Features

Sales and Support Contact:

Email: sales@tradewindsnetworks.com or support@tradewindsnetworks.com

Web: www.tradewindsnetworks.com

Tradewinds Networks
23 Corporate Plaza Ste 150
Newport Beach, CA 92660
www.tradewindsnetworks.com

